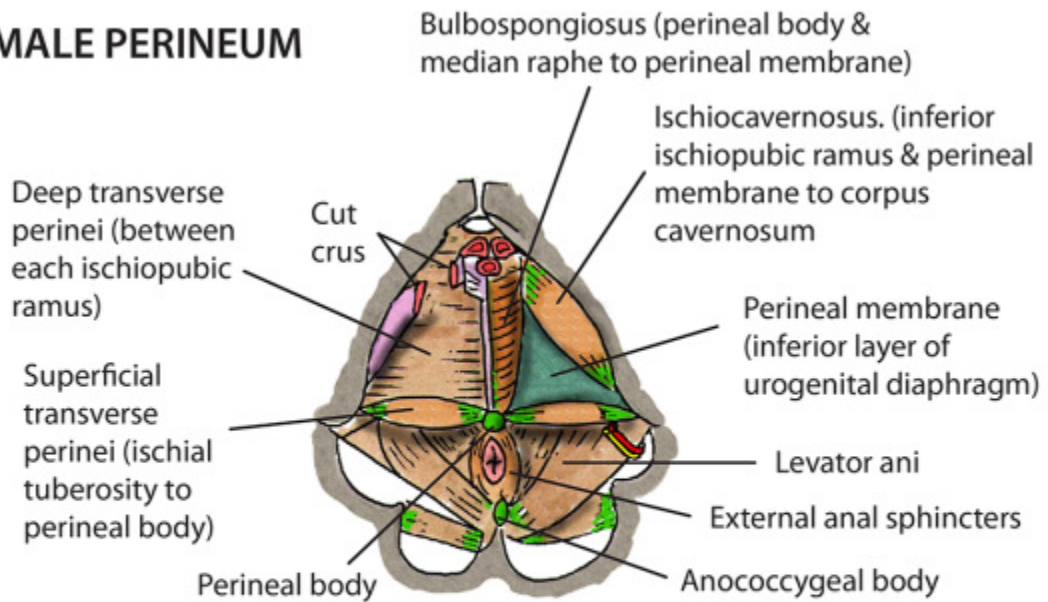


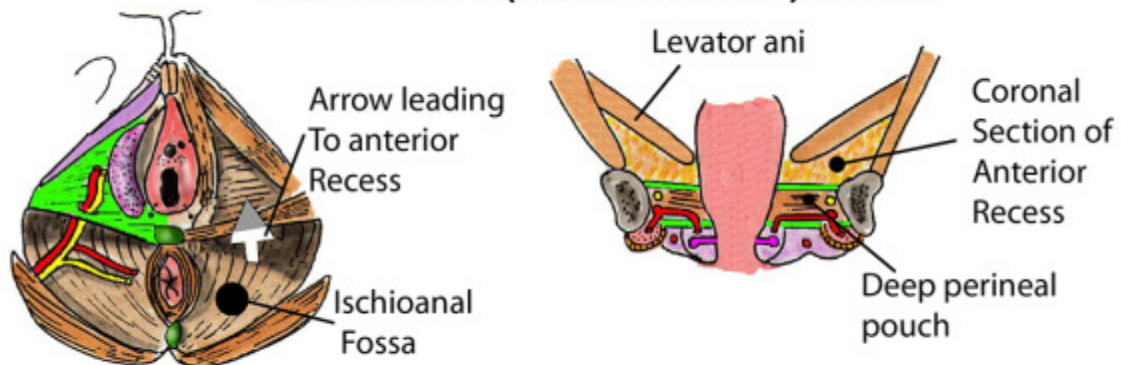
Perineum 1

MALE PERINEUM



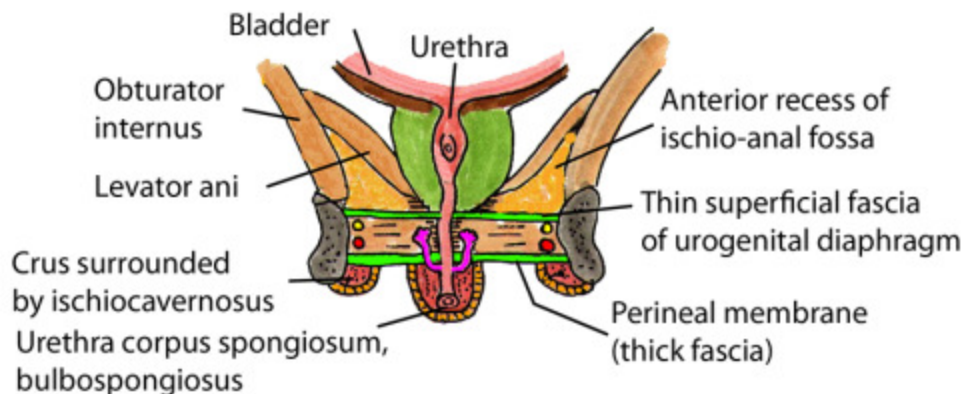
PERINEUM: That part of the trunk distal to the pelvic diaphragm
2 triangles lying at nearly a right angle to each other:
Urogenital - covered in below with urogenital diaphragm
Anal - covered only with skin & fascia (+/- gluteus maximus)

ISCHIOANAL (ISCHIORECTAL) FOSSA



- Wedge shaped & filled with fat
- Crossed by inferior rectal nerve & artery
- Alcock's canal in its lateral wall
- Base: Perineal skin. Medial: Anal canal, levator ani. Lateral: Ischial tuberosity, obturator internus. Apex: White line
- Anterior: Perineal body, urogenital diaphragm, anterior recess
- Posterior: Posterior recess, gluteus maximus, sacrotuberous ligament, anococcygeal body, horseshoe connection
- Contains: Fat, Alcock's (pudendal) canal, internal pudendal artery, pudendal nerve, inferior rectal artery/nerve, perineal branch of S4, perforating cutaneous nerve

MALE PERINEUM - DEEP PERINEAL POUCH

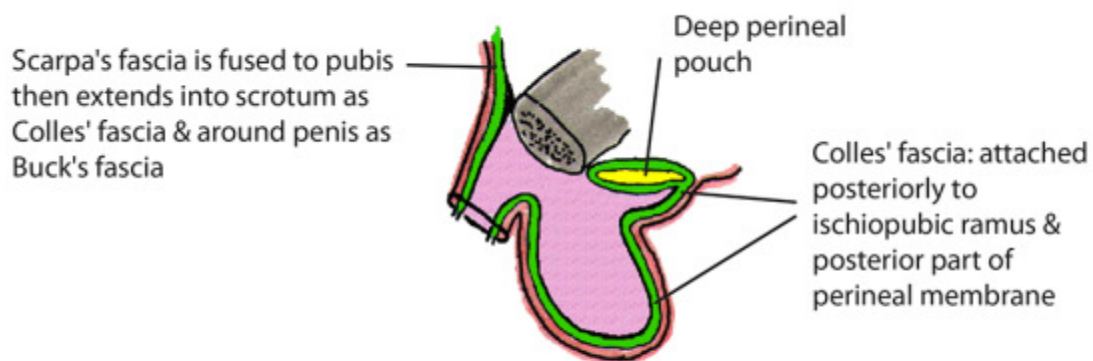


Deep perineal pouch (between perineal membrane & superior fascia of urogenital diaphragm).

Contains: membranous urethra, deep transverse perinei, external urethral sphincter, bulbourethral (Cowper's) glands which drain into urethra below the perineal membrane, internal pudendal vessels, dorsal nerve of penis

Note that external sphincter has striated muscle extensions around lower prostatic urethra, above the urogenital diaphragm that mix with smooth bladder wall muscle & are called the **intrinsic urethral mechanism**

MALE SUPERFICIAL PERINEAL POUCH



All perineal structures below the perineal membrane are in the superficial perineal pouch: 2 crura with ischiocavernosus muscles around them. Whole urethra with corpus spongiosum around it. Bulbospongiosus muscle around bulb. Superficial transverse perineal muscles, perineal body, perineal branches of internal pudendal artery, pudendal nerve & branches, Colles' fascia, ducts of Cowper's glands, deep & superficial external pudendal arteries, spermatic cords, testes, penis, dartos muscle (panniculus carnosus), branches of ilio-inguinal and genitofemoral nerves,

Scrotal blood supply: deep/superficial external pudendal, branches of internal pudendal. Veins to external pudendal

Nerves to scrotum: Anterior 1/3 - ilio-inguinal, posterior 2/3 - posterior scrotal brs of perineal & perineal brs of posterior femoral cutaneous nerve

Lymph: superficial inguinal glands