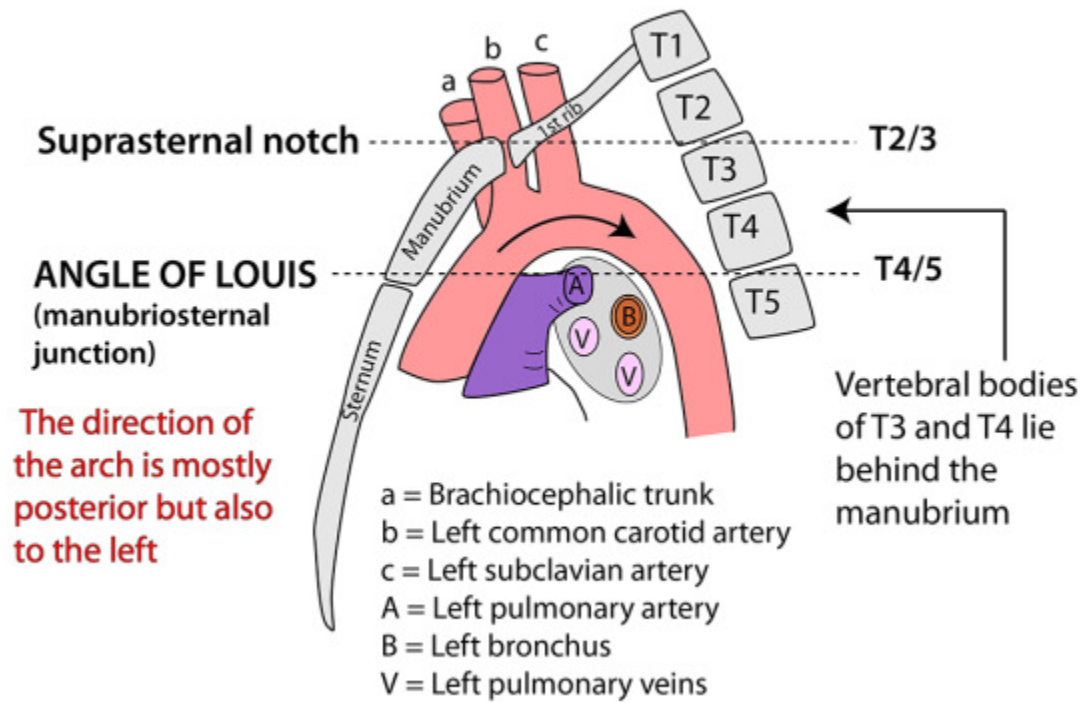


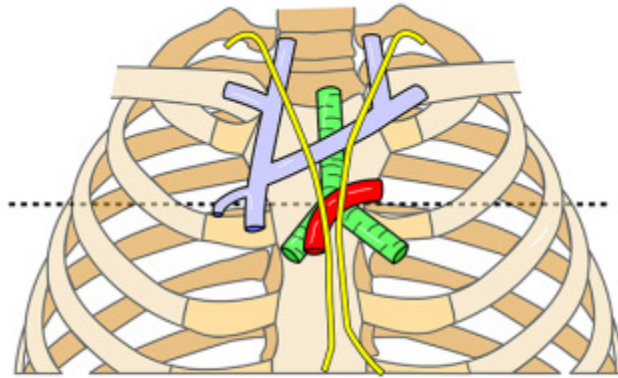
Angle of Louis, Vertebral Levels

KEY LEVELS IN THORAX

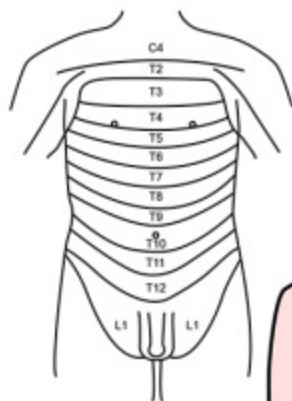


& Thoracic Dermatomes

ANGLE OF LOUIS (sternomanubrial junction)



- Manubriosternal junction
- Division of superior & inferior mediastinum
- Second costal cartilage
- Under surface of aortic arch
- Bifurcation of pulmonary artery
- Bifurcation of trachea
- Ligamentum arteriosum
- Left recurrent laryngeal nerve
- Cardiac plexuses
- Azygos arch/vein enters superior vena cava
- Pleura initially meet superiorly



Dermatomes
Nipples in T4
dermatome

VERTEBRAL LEVELS IN THORAX

