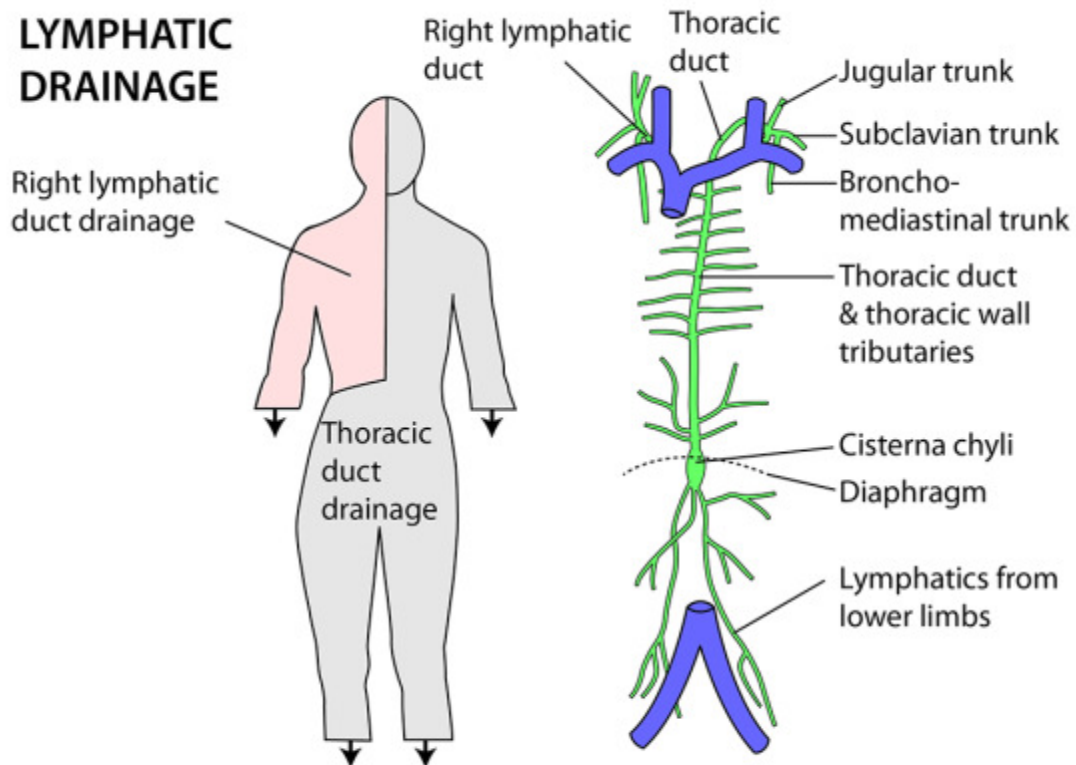
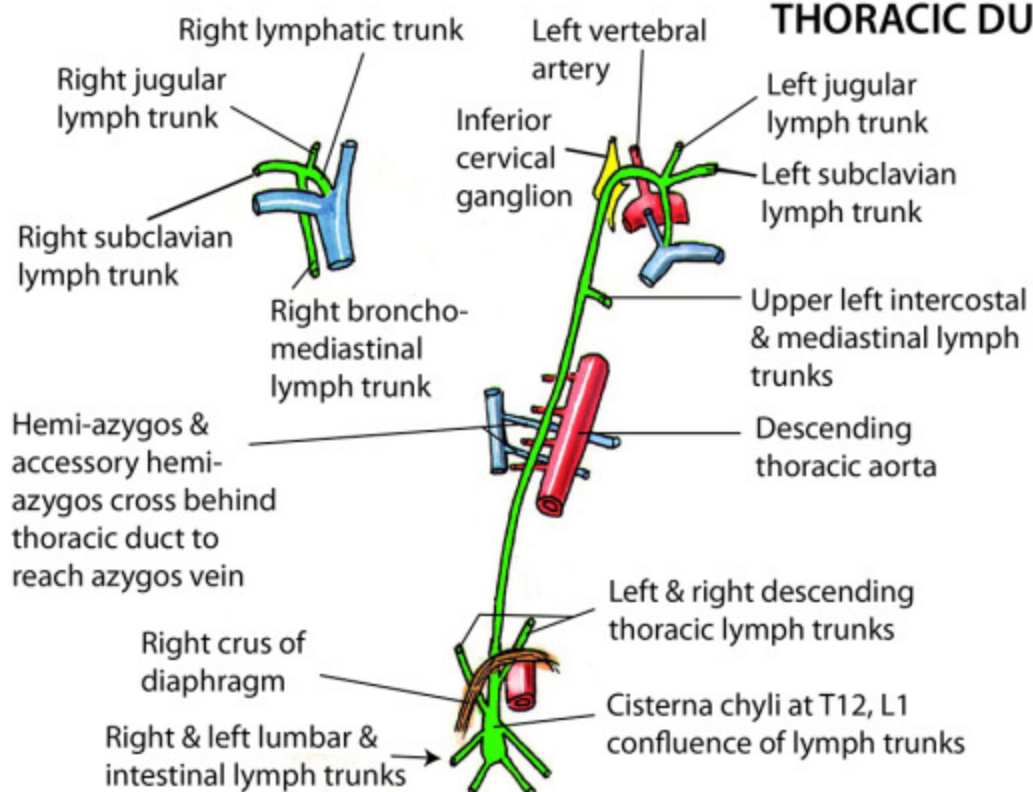


## LYMPHATIC DRAINAGE



## THORACIC DUCT



## THORACIC DUCT

1. 45cm long (see also spinal cord, femur, vas, transverse colon, teeth to cardia)
2. Many valves in system
3. Drains all lymph below the diaphragm, left head/neck & left thorax
4. Commences at T12, ascends posterior to right crus; to right of aorta & oesophagus, then posterior to oesophagus
5. Crosses to left of midline at T5
6. Lies superficial (anterior) to posterior intercostal arteries & the crossing azygos systems; over the dome of the pleura; over (anterior) to left vertebral & left subclavian arteries
7. Enters into confluence of left subclavian & left internal jugular veins