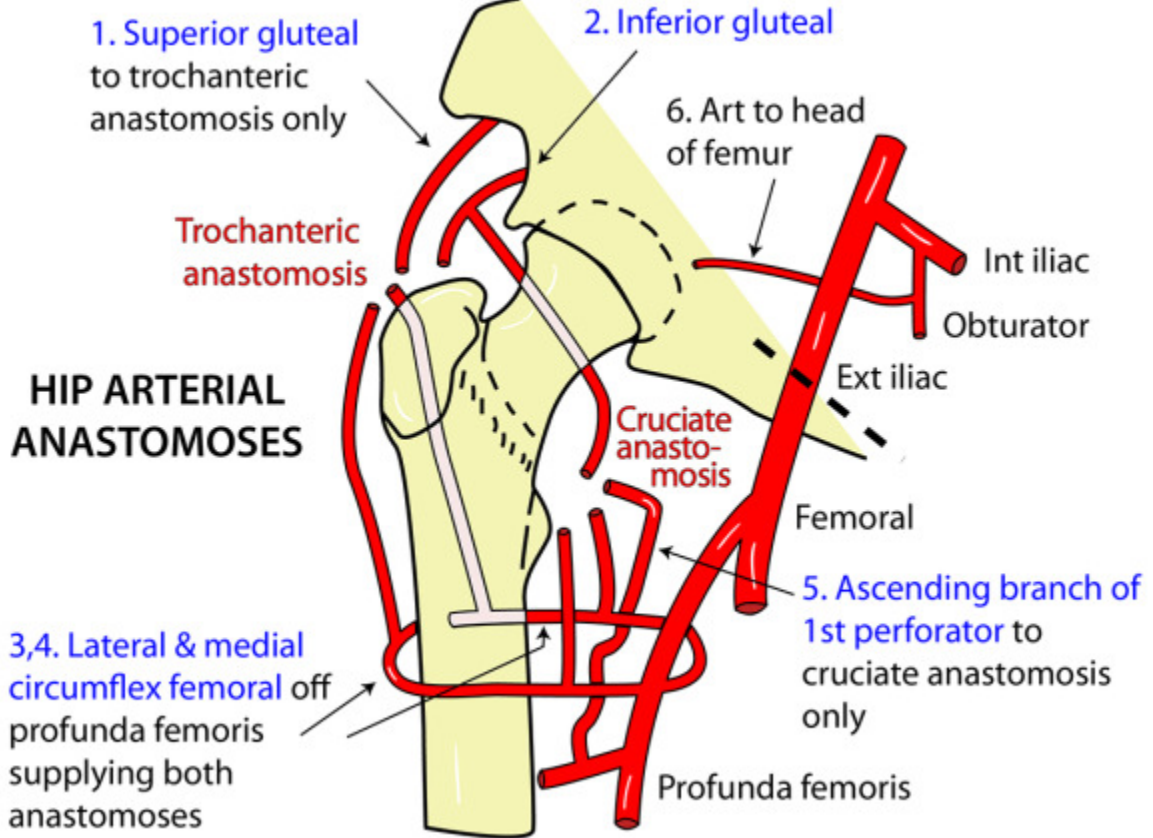


Arterial Supply of Hip



ARTERIAL SUPPLY TO HIP JOINT

Fracture lines.

A: Subcapital

destroying virtually all supply to head of femur. Note that the vessels run beneath the retinacular fibres.

B: Intertrochanteric

fracture which spares the majority of arterial supply to the head of the femur

Arteries within marrow cavity

