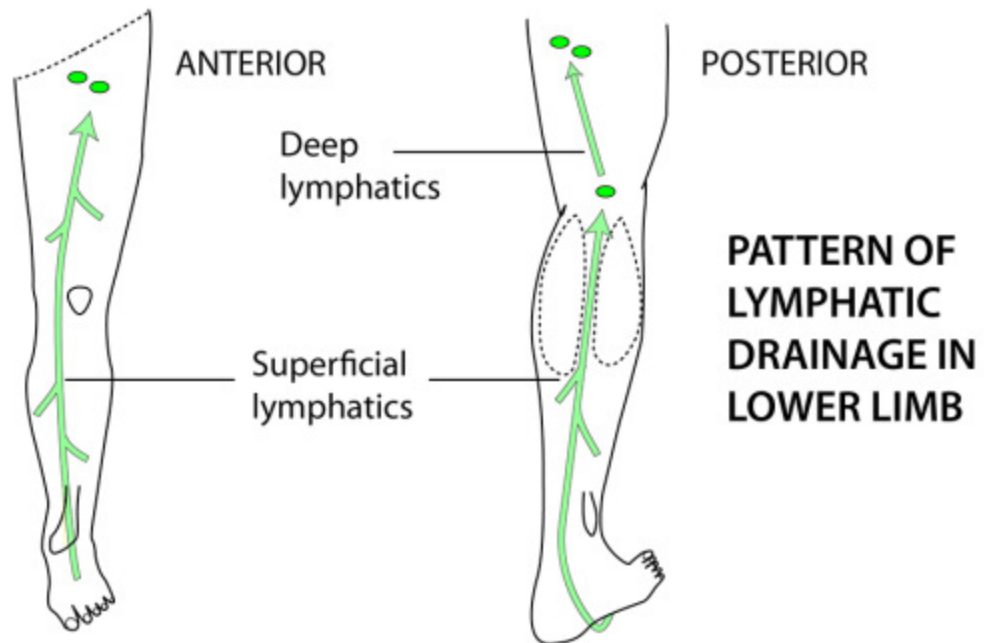
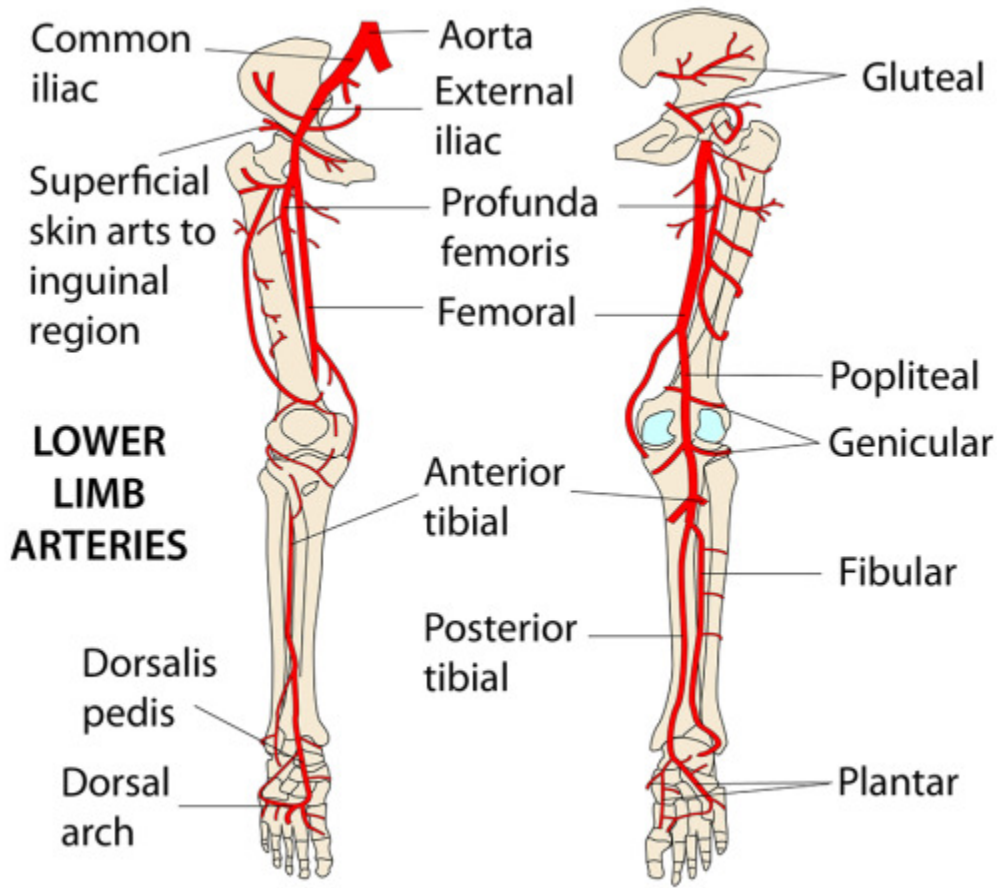


Overview of Arteries and Lymphatics in Lower Limb



Lymphatics from dorsum of foot, anterior leg and thigh run superficially following the great saphenous vein to the **superficial inguinal lymph nodes**

Lymphatics from sole of the foot and posterior leg run superficially with the short saphenous vein to the **popliteal lymph nodes**. Then with the deep veins to the **deep inguinal lymph nodes**