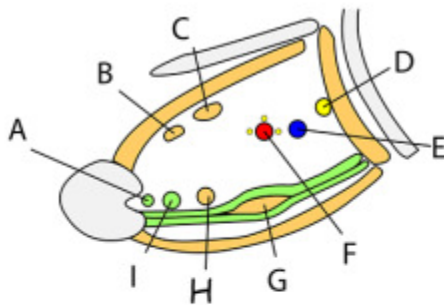


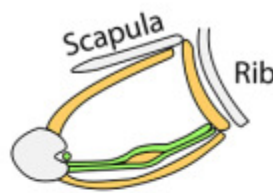
Axilla and its Three Spaces

AXILLA - Between arm and thorax

CONTENTS

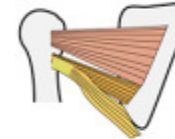


- A - Long head of biceps
- B - Latissimus dorsi
- C - Teres major
- D - Long thoracic nerve
- E - Axillary vein
- F - Axillary artery & cords
- G - Pectoralis minor
- H - coracobrachialis
- I - Short head of biceps + Lymph nodes



Medial wall
Serratus anterior to 4th rib

Posterior wall



Subscapularis
Teres major
Latissimus dorsi

Lateral wall

Intertubercular (bicipital) groove
Biceps tendon

Anterior wall

Pectoralis major
Pectoralis minor
Clavipectoral fascia

A truncated cone



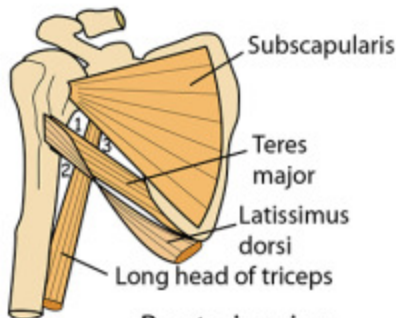
Apex

Clavicle
Scapula
Outer 1st rib

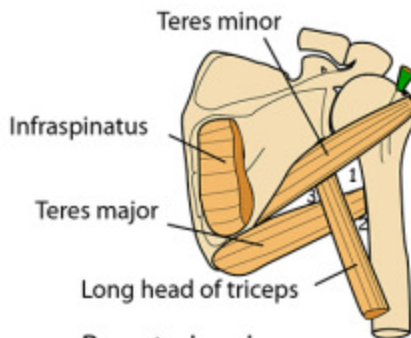
Floor

Axillary fascia which is held by suspensory ligament & lies between anterior & posterior axillary folds, deep fascia of arm & serratus anterior

QUADRANGULAR, MEDIAL & LATERAL TRIANGULAR SPACES OF THE UPPER ARM



R anterior view



R posterior view

1. Quadrangular space

Site: In posterior wall of axilla

Borders - superior: subscapularis anteriorly, teres minor posteriorly, inferior: teres major, medial: long head of triceps, lateral: medial shaft of humerus.

Contains: Axillary nerve, posterior circumflex humeral artery & vein

2. Lateral triangular space

Site: In posterior wall of axilla

- superior/medial: teres major, inferior/medial: long head of triceps, lateral: medial shaft of humerus

Contains: Radial nerve & profunda brachii vessels

3. Medial triangular space

Site: In posterior wall of axilla

Borders - superior: subscapularis anteriorly, teres minor posteriorly, inferior: teres major, lateral: long head of triceps

Contains: Circumflex scapular artery