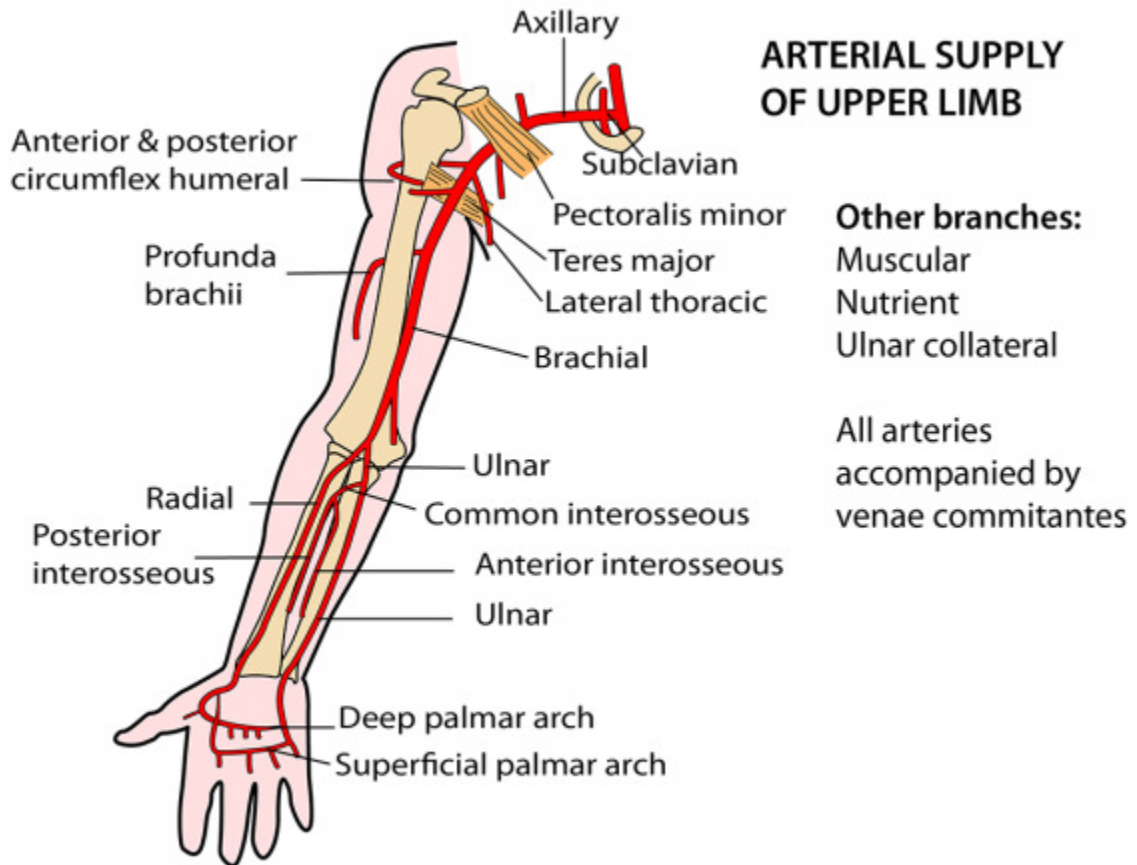
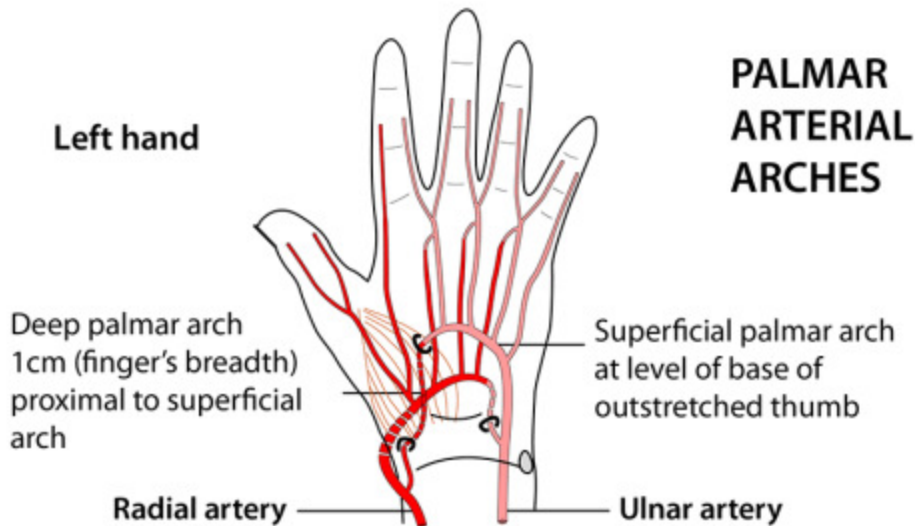


Arteries, Veins & Lymphatics in the Upper Limb - An Overview



Left hand



DEEP PALMAR ARCH

From radial artery. Communicates with superficial arch

Branches:

- Princeps pollicis
- Radialis indicis
- 3 palmar metacarpal
- 3 perforating branches

SUPERFICIAL PALMAR ARCH

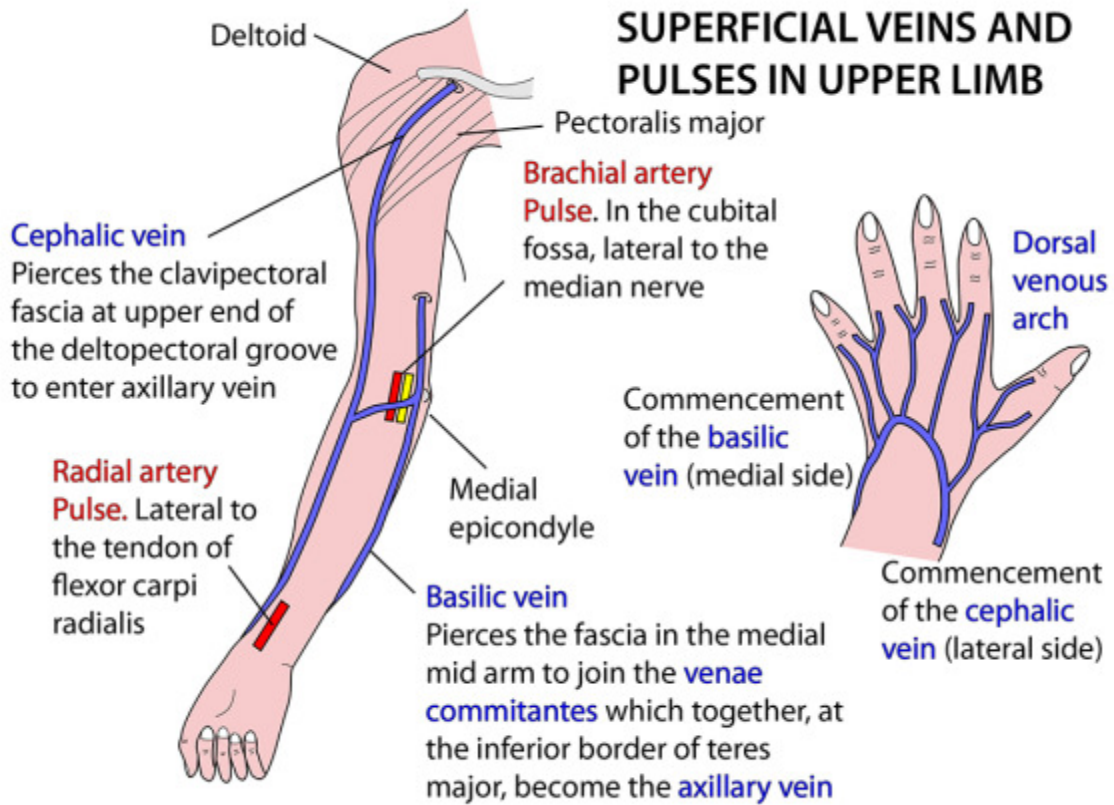
From ulnar artery.

Communicates with deep arch

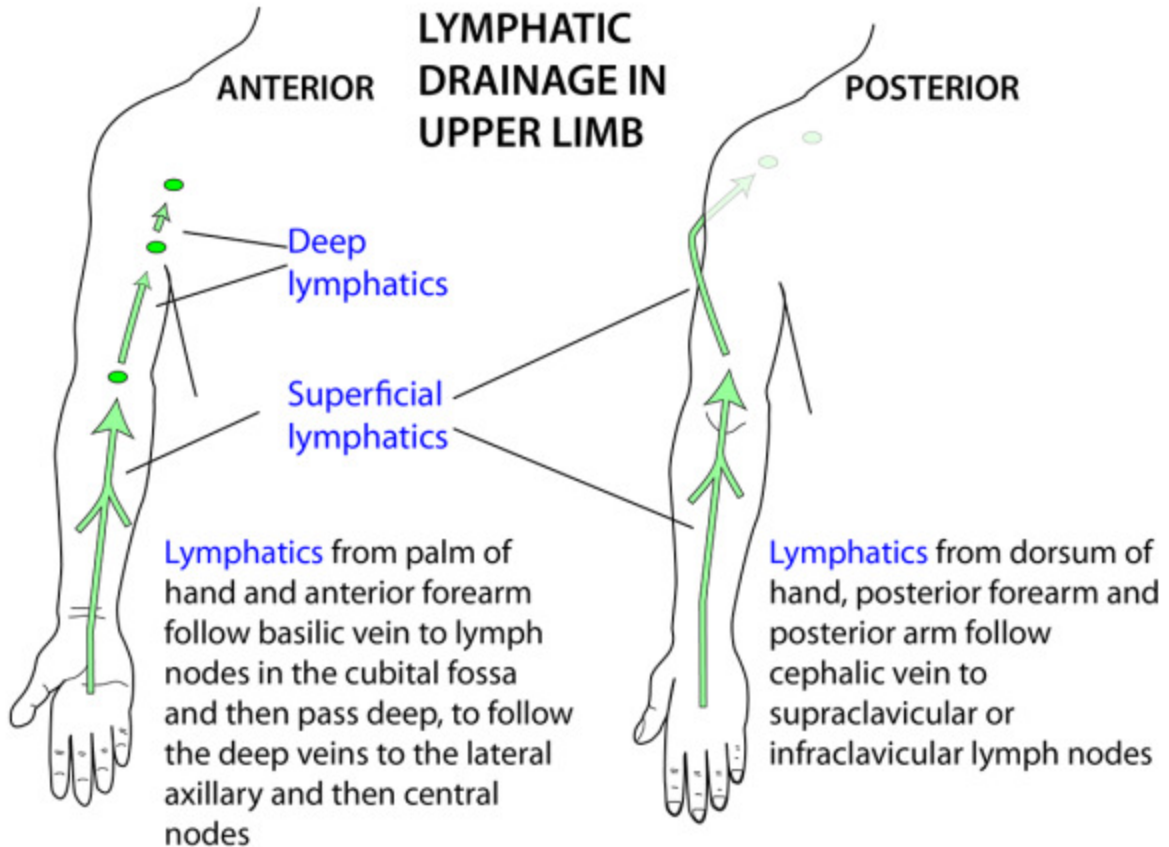
Branches:

- Palmar digital arteries & communicating branches with metacarpal arteries of deep arch

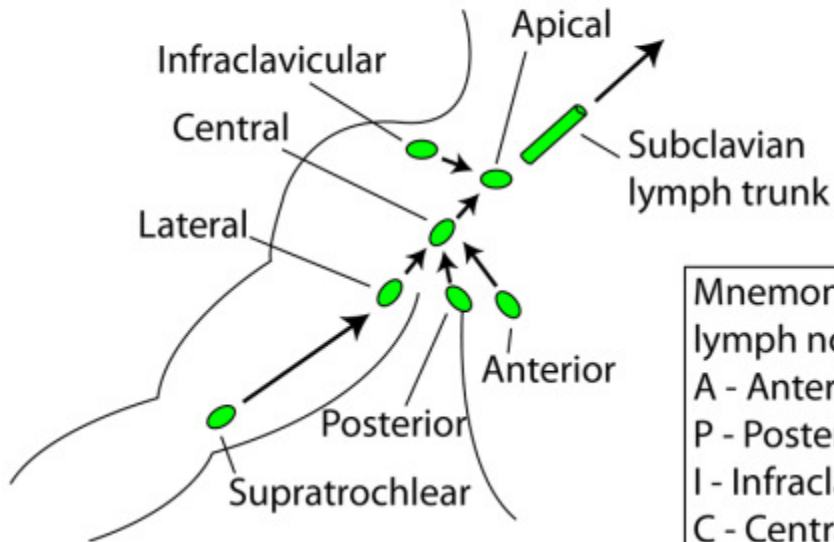
SUPERFICIAL VEINS AND PULSES IN UPPER LIMB



LYMPHATIC DRAINAGE IN UPPER LIMB



UPPER LIMB LYMPH NODES



75% of lymphatics from the breast drain to axillary nodes. Others to internal thoracic, abdominal nodes or to other breast

Mnemonic for axillary lymph nodes:
A - Anterior
P - Posterior
I - Infraclavicular
C - Central
A - Apical
L - Lateral