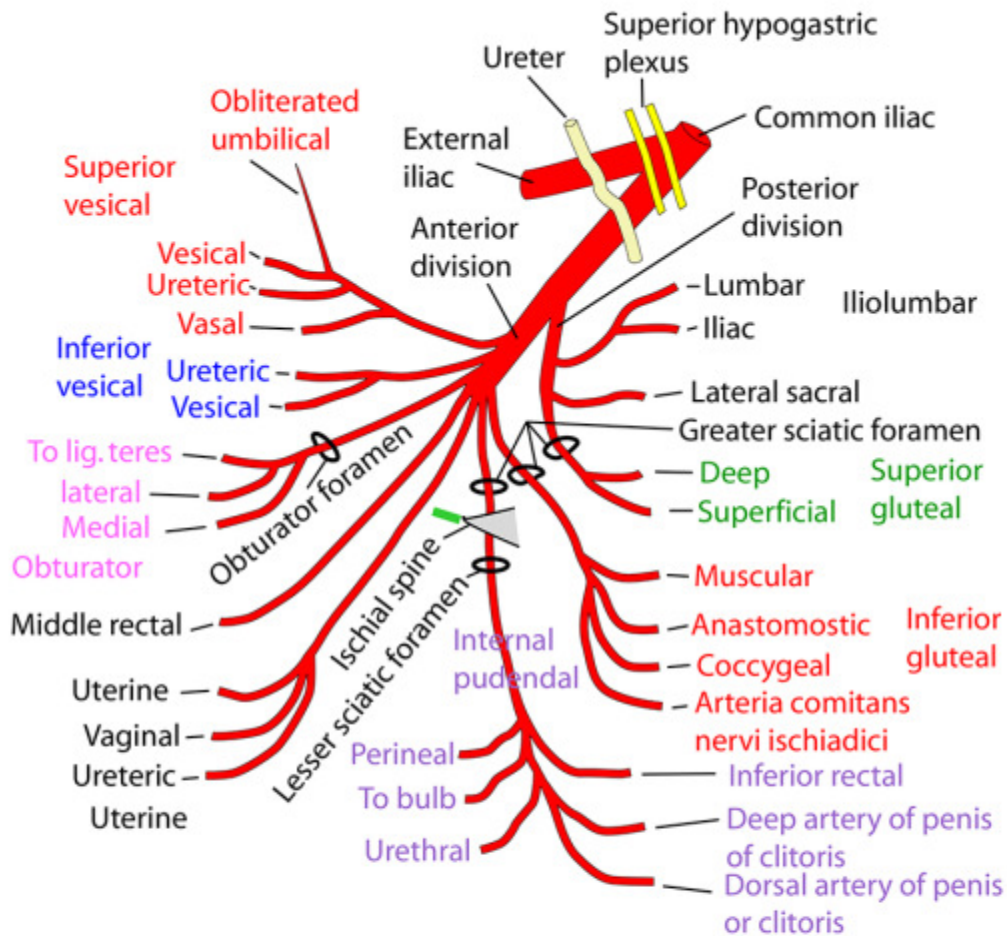
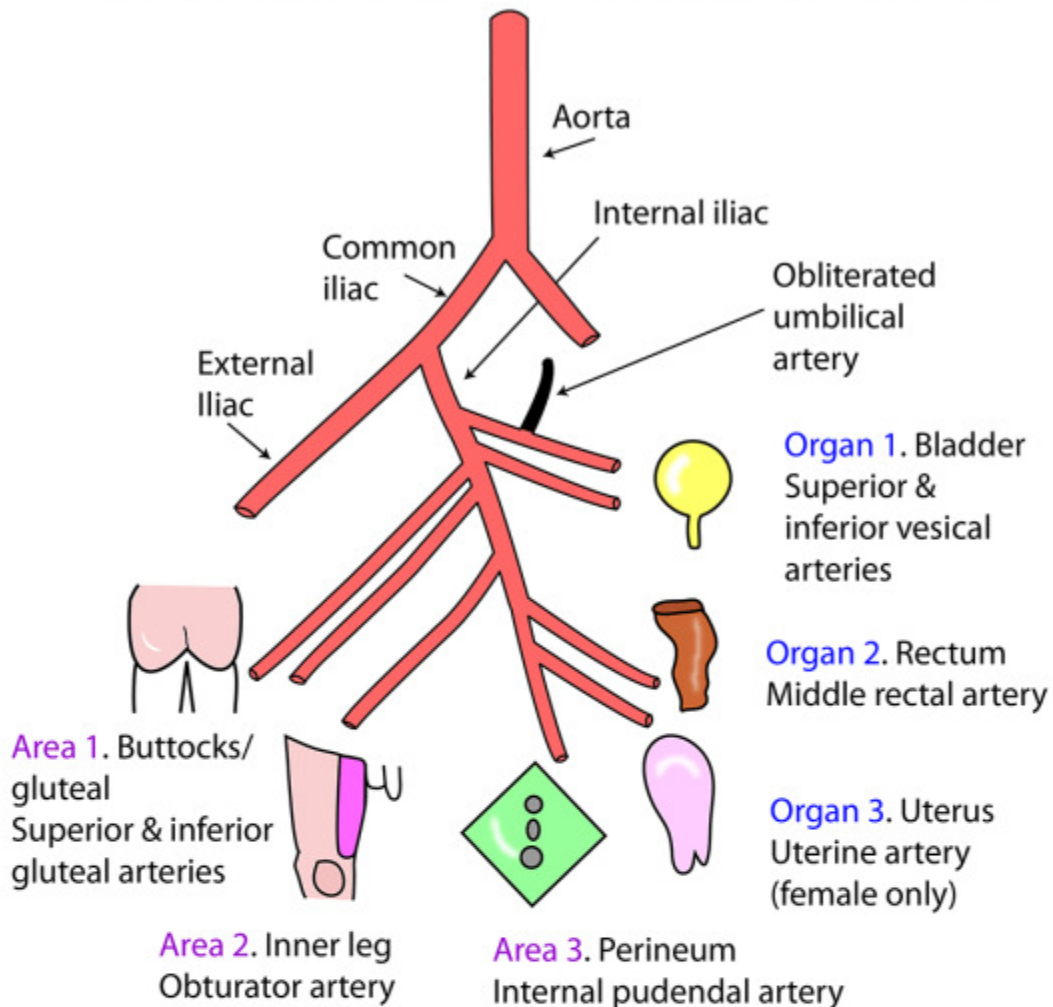


BRANCHES OF THE INTERNAL ILIAC ARTERY



- ILIOLUMBAR:** Passes laterally, behind obturator nerve & psoas. Lumbar branch to psoas, quadratus lumborum & spine. Iliac branch to iliacus, iliac bone, anastomosis at anterior superior iliac spine
- LATERAL SACRAL:** Passes inferiorly, lateral to anterior sacral foramina & anterior to nerve roots & piriformis
- ARTERY TO VAS:** Usually off superior vesical (or inferior vesical)
- UTERINE ARTERY:** In female it largely replaces middle rectal (or inferior vesical)

BRANCHES OF THE INTERNAL ILIAC ARTERY



A simple representational diagram of the branches of the internal iliac artery. An easy way to remember them is to think of them in 2 groups, each with 3 branches. **Group 1** has 3 branches to organs (bladder, rectum and uterus) and **Group 2** has 3 branches to areas (buttocks/gluteal, adductor compartment and perineum).

ILIO LUMBAR: Passes laterally, behind obturator nerve & psoas. Lumbar branch to psoas, quadratus lumborum & spine. Iliac branch to iliacus, iliac bone, anastomosis at anterior superior iliac spine

LATERAL SACRAL: Passes inferiorly, lateral to anterior sacral foramina & anterior to nerve roots & piriformis

ARTERY TO VAS: Usually off superior vesical (or inferior vesical)

UTERINE ARTERY: In female it largely replaces middle rectal (or inferior vesical)