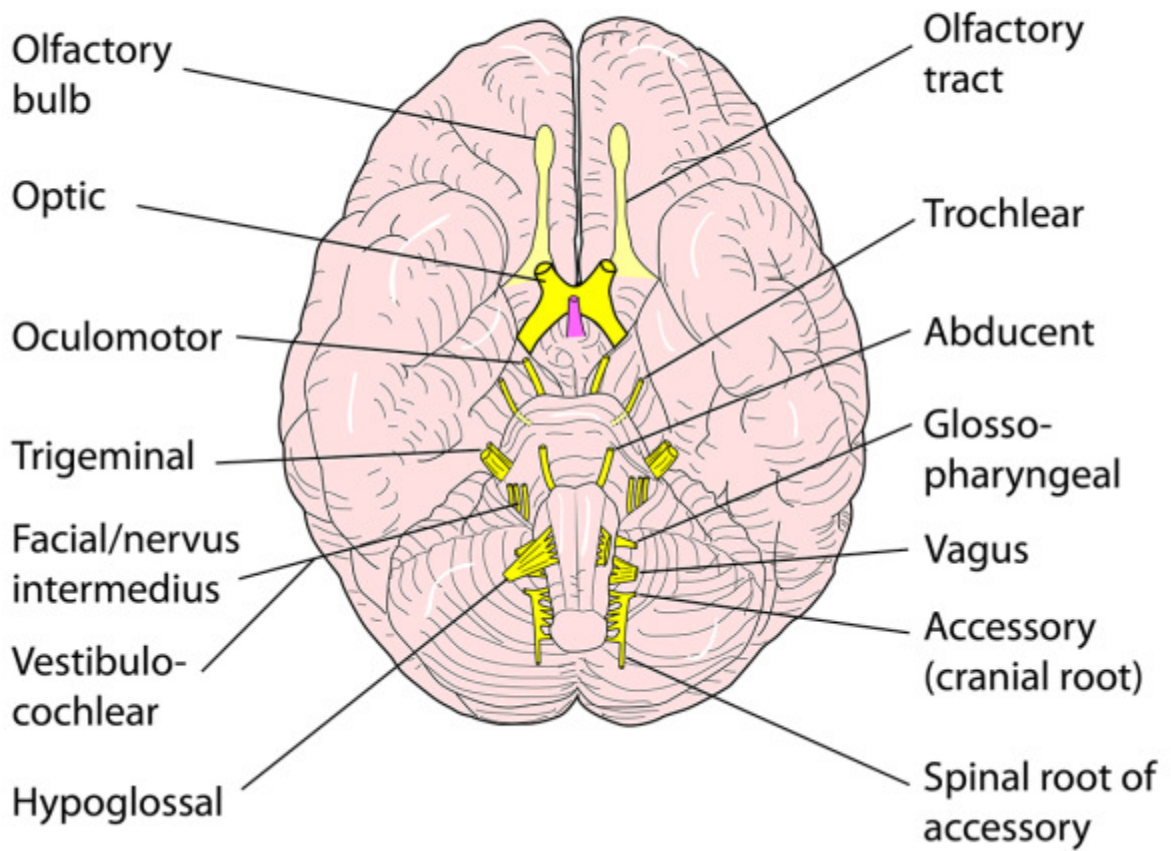


## CRANIAL NERVES LEAVING THE BRAIN



## SUMMARY OF CRANIAL NERVES

I	OLFACTORY	SMELL (special sensory)
II	OPTIC	SIGHT (special sensory)
III	OCULOMOTOR	EYE MOVEMENTS (somatic motor)
IV	TROCHLEAR	EYE MOVEMENTS (somatic motor)
V	TRIGEMINAL	SENSORY (branchiomotor for mastication)
VI	ABDUCENT	EYE MOVEMENTS (somatic motor)
VII	FACIAL	BRANCHIOMOTOR (facial expression)
VIII	VESTIBULOCOCHLEAR	HEARING/BALANCE (special sensory)
IX	GLOSSOPHARYNGEAL	SENSORY TO OROPHARYNX (branchiomotor to a single muscle)
X	VAGUS	PARASYMPATHETIC (branchiomotor from XI to palate,etc)
XI	ACCESSORY	CRANIAL ROOT (branchiomotor) JOINS VAGUS. SPINAL ROOT (somatic motor) TO STERNOCLEIDOMASTOID AND TRAPEZIUS
XII	HYPOGLOSSAL	MOTOR TO TONGUE

- Special senses
- Somatic motor
- Branchiomotor
- General sensory
- Parasympathetic

This is a very simplified outline of the cranial nerves. Several of them carry sympathetic and parasympathetic fibres

## CRANIAL NERVES WITH MOTOR SUPPLY TO MUSCLES OF BRANCHIAL ORIGIN

	BRANCHIOMOTOR (MUSCLES OF BRANCHIAL ORIGIN)
V	<b>Nucleus:</b> Motor of trigeminal M of mastication, mylohyoid, ant digastric, tensors palati & tympani
VII	<b>Nucleus:</b> Facial M of facial expression, buccinator, post digastric, stylohyoid, stapedius, occipitalis
IX	<b>Nucleus:</b> Ambiguus Stylopharyngeus
X	<b>Nucleus:</b> Ambiguus M of pharynx, upper oesophagus, palate, larynx (from cranial XI)
XI	<b>Nucleus:</b> Ambiguus M of palate & pharynx via vagus

Cranial nerves V, VII, IX, X are the nerves to the branchial (pharyngeal) arches 1, 2, 3, 4/6 respectively. In addition the cranial part of XI dumps its fibres on the vagus to be distributed with it

