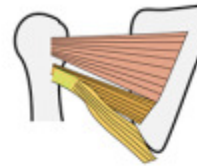
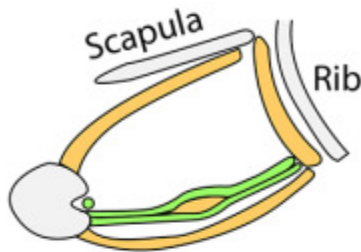
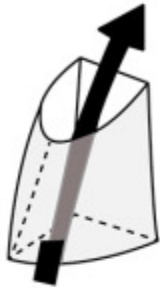


Axilla and Cubital fossa

AXILLA (Between arm and thorax)

A truncated cone



Posterior wall

Subscapularis
Teres major
Latissimus dorsi

Medial wall

Serratus anterior
to 4th rib

Lateral wall

Intertubercular
(bicipital) groove
Biceps tendon

Anterior wall

Pectoralis major
Pectoralis minor
Clavipectoral fascia

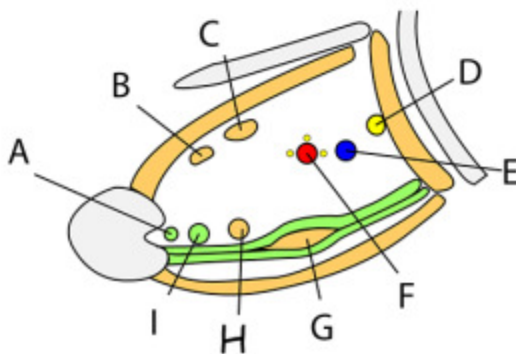
Apex

Clavicle
Scapula
Outer 1st rib

Floor

Axillary fascia which is
held by suspensory ligament
& lies between anterior &
posterior axillary folds, deep
fascia of arm & serratus anterior

CONTENTS



- A - Long head of biceps
- B - Latissimus dorsi
- C - Teres major
- D - Long thoracic nerve
- E - Axillary vein
- F - Axillary artery & cords
- G - Pectoralis minor
- H - coracobrachialis
- I - Short head of biceps
+ Lymph nodes

SUPERFICIAL CUBITAL FOSSA (RIGHT SIDE)

Boundaries:

Triangular area between:
Pronator teres
Brachioradialis
Line between epicondyles

Contains:

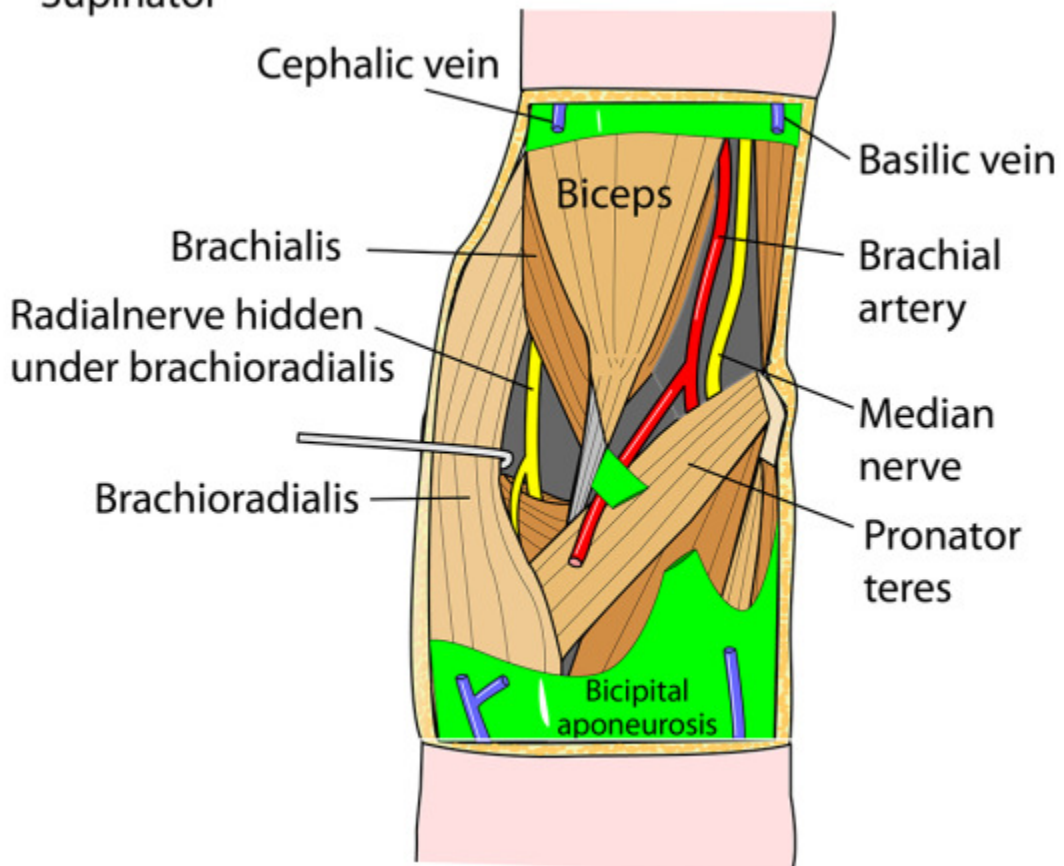
Brachial artery
Median nerve
Biceps tendon
lymph nodes

Roof:

Deep fascia of forearm
Bicipital aponeurosis
Median cubital vein
Medial cutaneous nerve of forearm
Lateral cutaneous nerve of forearm

Floor

Brachialis
Supinator



DEEP CUBITAL FOSSA (RIGHT SIDE)

CONTAINS

- Median nerve
- Brachial artery
- Biceps tendon
- Lymph nodes
- (laterally, under brachioradialis, are radial & posterior interosseous nerves)

Mnemonic for order of structures from lateral to medial

TAN

(tendon-artery-nerve)

